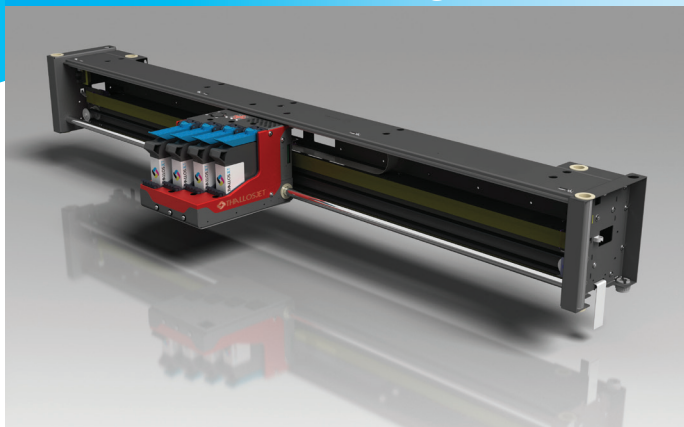


TJ 2" Single Pass Printer - 20" Scanning Bar

HP TIJ Fully Integrated Printer and Scanning Solution



DESCRIPTION - TJ 20" Scanning Bar



OEM integrators or industrial applications may require a flexible scanning ink jet printing device ready to be installed: the TJ 20" Scanning Bar perfectly fits this need.

OEM can focus on the media handling and the production flow control while the know-how integrated in the TJ iPBar **makes inkjet printing an easy job.**

The secured ink supply control makes the integration affordable and grants managed profits on consumables.

DESCRIPTION - TJ 2" Single Pass Printer



The TJ 2" Single Pass Printer is the **most affordable** printing solution of its category.

It can print horizontally or vertically on your media with an unlimited range of inks while the media is moving, **either continuous or stop & go.**

Feeding data is easy thanks to the wide range of driving possibilities (from Windows to OEM solutions).

Our proprietary software and firmware, together with a secured ink supply control makes **the integration affordable and grants a managed profit on consumables.**

Scanning Bar & Single Pass SPECIFICATIONS

- Print resolution: native 600 dpi, 300 to 1200+ dpi interleaved
- Printing technology: Thermal Inkjet Technology by HP
- Printing speed: up to 60m/min, dependent on resolution (TJ Single Pass)
- Print width: up to 50 mm, 2" (TJ Single Pass)
- Inks: Water and Solvent based, Food Grade
- Ink Colors: Black, Spot and Composite CMYK
- On board print heads management & inks level controls
- RFID Ink Management
- SICA - Swap Ink Change Application
- IR - UV LED Capable
- Connectivity: USB 2.0 or custom/OEM interfaces
- Software: Windows driver, DLL for OEM application

