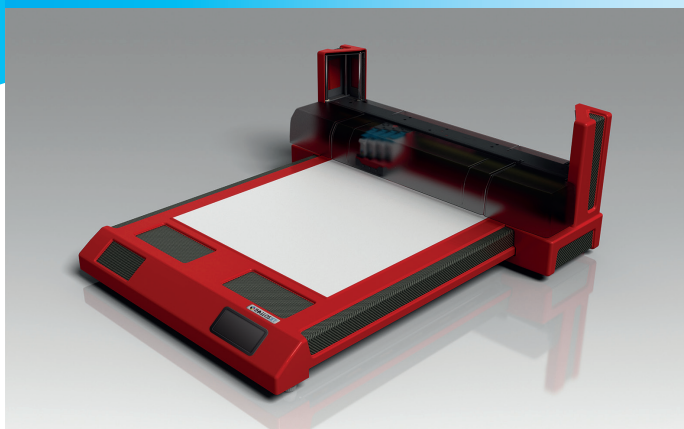


TJ miniFlatbed

World's First HP45 Flatbed Printer



DESCRIPTION

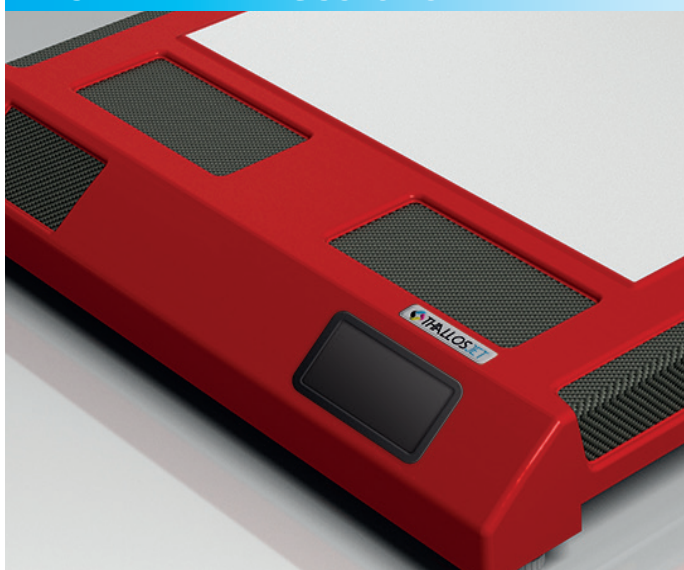


TJ miniFlatbed is the **world's first scanning solution with composite CMYK** based on HP45 cartridges. Is compact, versatile, limitless and adaptable to various printing environments. Our printer is **highly customizable** with vacuum table or IR-UV LED for best ink adhesion.

The TJ miniFlatbed is a highly **customizable inkjet printing tool**, a surface where media and objects can be printed for unlimited applications.

With **user-friendly print settings** and functions and intuitive operation it can be simply introduced into any print production environment for the innovative personalisation of any kind of item, or for inkjet drop deposition.

VERSATILE PRINTING SOLUTION



The TJ miniFlatbed is the flatbed inkjet printer with a unique feature: inks swapping in matter of seconds, the same miniFlatbed **can print all the range of available inks** just swapping the print heads and the RIP settings in seconds!

For the very first time new applications are not limited by the printer configuration, the TJ miniFlatbed **can use existing and future ink solutions** without need for complicated cleaning operation and ink waste.

The secured ink supply control makes the integration affordable and grants a managed **profit on consumables**.

TJ miniFlatbed SPECIFICATIONS

- Print resolution: 300x300 dpi to 600x1200 dpi
- Printing technology: Thermal Inkjet Technology by HP
- Printing dimensions: 610x510 mm - 24"x20"
- Material thickness: up to 140 mm - 5,5"
- Inks: Water and Solvent based, Food Grade
- Ink Colors: Black, Spot and Composite CMYK
- Customizable printing table with/without vacuum
- IR - UV LED capable
- SICA - Swap Ink Change Application
- RFID Ink Management
- Laser height detection and automatic "zero" positioning
- Connectivity: USB 2.0
- Windows utility software & driver
- Software: TJ RIP

